

Office containers Sanitary

The Office Container Sanitary is available in various types and sizes. They are suitable for (major) events or building sites. The Office Container Sanitary is available in a separated ladies/gentlemen or a single gentlemen version.



10ft sanitair "ladies / gentlemen"



20ft sanitair "ladies / gentlemen"

Technical data:

- **Insulation:** Roof / floor / wall 80 / 60 / 80
- **Frame:** Steel frame with forkliftpockets
- **Floor:** Woodchip and casting floor
- **Outer wall:** Profiled galvanized steel plates
- **Colour:** Standard ral 9010 (steel plated) and ral 3004 (frame)
- **Inner wall:** Melamine chipboard, white
- **Doors:** Insulated galvanized steel panels with cylinder lock
- **Windows:** Matted glass
- **Electrics:** 380 V, CEE-form, NEN 1010
- **Heating:** electric wall convector
- **Sanitary:** WC cabin with lavatory with water reservoir, paper-holder



Inside

Type "H"

lxbxh = 6058 x 5980 x 2820 mm with toilets, sinks and portal

Type "K"

lxbxh = 3000 x 2438 x 2800 mm
10ft sanitary "ladies / gentlemen"

Type "L"

lxbxh = 3000 x 2438 x 2800 mm
10ft sanitary : "building"

Type "M"

lxbxh = 6058 x 2438 x 2800 mm
20ft sanitary: "ladies / gentlemen"

Office containers



Our office units are the ideal solution for temporary office space for all organizations such as; construction, installation, infrastructure, events, municipalities, etc. They can be used as offices, canteens, meeting-spaces or a quick solution for extra sanitary capacity. The Office containers are stackable, connectable and are easily delivered. Interior design options are adaptable to your needs.

Always a solution!



for further information: CARU Containers BV
T +31 (0)168 387 000

Graanweg 11
4782 PP Moerdijk

www.carucontainers.com
info@carucontainers.com

Office containers 6 x 3

The Office containers, external dimensions 6 x 3 meters, are stackable, connectable and have flexible interior design options. It is an ideal solution for temporary office space with numerous applications.



Technical data:

- **Insulation:** Roof 80/ floor 60/ wall 80
- **Frame:** Steel frame with forklift pockets
- **Floor:** Woodchip covered with vinyl
- **Outer wall:** Profiled galvanized steel plates
- **Colour:** Standard Ral 9010 (steel plated) and Ral 3004 (frame)
- **Doors:** Insulated galvanized steel panels with cylinder lock
- **Windows:** Plastic, tilting window with double insulation glass and plastic roller blind
- **Electrics:** 380 V, CEE-form, according NEN 1010
- **Heating:** 1 electric heater, air-conditioning is optional



Type "A"



lxbxh = 6058 x 2990 x 2820
Open space

Type "B" (connectable)

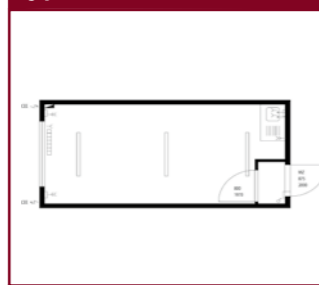


lxbxh = 6058 x 2990 x 2820
Open space



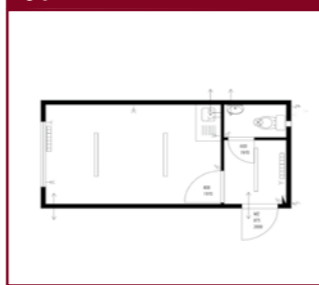
Interior with kitchen

Type "C"



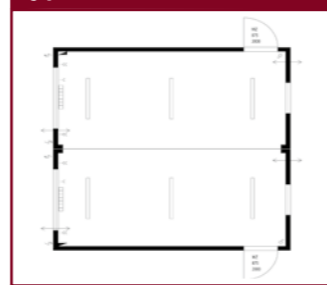
lxbxh = 6058 x 2990 x 2820
With kitchen and portal

Type "D" (connectable)



lxbxh = 6058 x 2990 x 2820
With kitchen and toilet

Type "G" (connectable)



lxbxh = 6058 x 2990 x 2820
Duo-container, open space

Office containers 6 x 2.5

We offer the 20ft Office containers as either unassembled flatpicks or as fully functioning units. The unassembled Office containers are easy to ship as they are wrapped in bundles of 4 (20ft) and can be assembled with the use of our written instructions. They are available in two heights: 2.60 mtr or 2.80 mtr.

Technical data:

- **Insulation:** Roof 100 / floor 80 / wall 50
- **Frame:** Steel frame with forklift pockets
- **Floor:** Plywood covered with vinyl
- **Outer wall:** Profiled steel, sandwich panels, removable
- **Colour:** Standard ral 9010 (panels) and ral 3004 (frame)
- **Inner wall:** Melamine chipboard, white
- **Doors:** Insulated with cylinder lock
- **Windows:** Plastic, tilting window with double insulation glass and plastic roller blind
- **Electrics:** 380 V, CEE-form, according NEN 1010
- **Heating:** 1 electric heater, option for airco



Stackable



Flatpack



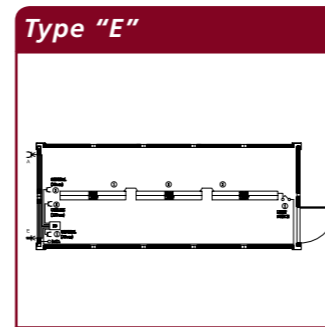
Bundle



20ft Open space, height 2.80 mtr



20ft Inside, height 2,80 mtr



lxbxh = 6055 x 2435 x 2790 / 2590 mm
20ft Open space



lxbxh = 3055 x 2435 x 2790 mm
10ft Open space



20ft Open space, Height 2.60 mtr



20ft Inside, height 2.60 mtr

Always a solution!